



CONNECT

eBook

Welcome

Custom, on-demand, research community gateways.

Build a Gateway to your
community's **open** and **linked**
research outputs.

Turn Open Science into Practice.
A service customized to your
needs.



Alessia Bardi



“With OpenAIRE CONNECT we want to break down the barriers that hinder the adoption of Open Science practices. Since 2017 we have been working with communities of different types and maturity level. Thanks to CONNECT, we can support the growth of small and large communities, demonstrating how important is their contribution in the research landscape and providing tools for an efficient transition towards Open Science and the European Open Science Cloud”.

Service Manager



Core Team



FRONT-END MANAGER

Argiro Kokogiannaki

BACK-END MANAGER

Miriam Baglioni



DATA MINING MANAGER

Harry Dimitropoulos



IT SYSTEM ADMINISTRATOR

Sebastian Tymków



OUTREACH & ENGAGEMENT OFFICER

Giulia Malaguarnera



Do not get lost in the research data trek

With OpenAIRE CONNECT you can gather all research outputs of your community in one place.

Create and manage a personalized gateway for your research community to mobilise the discovery, assess and outreach of research products that matter to you and your audiences.



+30

CONNECT Gateways

Research communities available in public or private mode.

+15

Research initiatives or infrastructures

European funded projects, and research infrastructures collect related research findings in their gateways.

+5

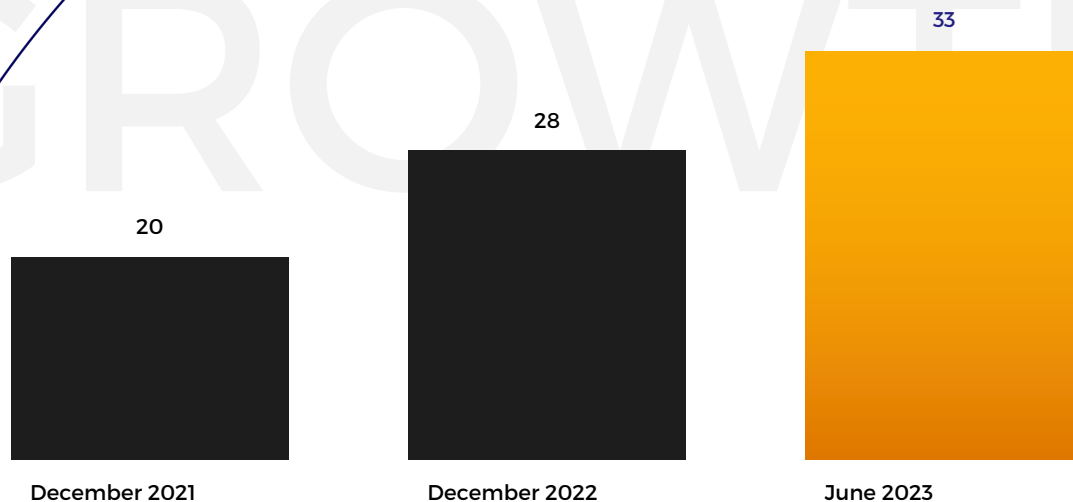
Universities alliances

Alliances with many members find a way to share their research products among their staff and students.

+10

Thematic research communities

Thematic based research communities share specific research findings with their peers.



65%

Growth since 2021

From its conception in 2017, more and more research projects, infrastructures and thematic research communities chose OpenAIRE CONNECT to support the Open Science practices of their researchers.



Problem

Open Science practices are not fully integrated with the research flow and research outputs are scattered across repositories.

Despite the hype, Open Science is usually not integrated in the research flow and researchers hardly find the tools, best practices and a complete record of research of their community. Reporting is also a challenge and requires tedious manual work.

Turn Open Science into practice with CONNECT.

Effective Solution

A CONNECT Research Community Gateway is an Open Science Toolkit for your community

Whether you are a research infrastructure, initiative, or a thematic research project, you can have a virtual research environment with a time-saving bundle of services to effectively practice Open Science. An overlay platform making it easy to share, link, disseminate and monitor all your publications, data, software, methods. In one place.



The percentage of higher-education institutions in Europe* that could benefit from CONNECT

19.9%

*<https://www.4icu.org/Europe/#:~:text=European%20Universities%20World%20Representation%20How%20many%20Universities%20are,currently%20%2C725%20officialy%20recognized%20higher-education%20institutions%20in%20Europe.>

1

Community-oriented Open Science publishing tools

Researchers can continue using research infrastructure services and publishing practices but, if needed, can find support for publishing/interlinking any kind of product



2

Collaborative curation of a community-specific scholarly communication information graph

An environment for the community to share, discover, interlink, gather, and reuse (reproduce) scientific results. Powered by the OpenAIRE Graph.

3

Community-oriented reporting and Open Science monitoring

Reporting to funders, development of scientific reward strategies inclusive of all products of science



Benefits

SEARCH

Discover research products related to your community. Access information from the OpenAIRE Graph that has been selected by experts of your research community, who want to help you out with the data and literature deluge.

LEARN

Find out the **best practices** of your community. Access to **webinars** and **tutorials** about Open Science organised by your **community** and by **OpenAIRE**.

LINK

Help growing the record of research of your community. **Link** your **research** product with your community, **funding** and other research **products**.

DEPOSIT

Find a **repository** to deposit your research outcome. Discover where to **publish** in Open Access. Find the appropriate repository to deposit your research products, whatever the type, or to include them in your data management plan.

Benefits for researchers

1 **Adaptable to your community identity**

Configure the gateway according to the visual identity of your community: colors, logos, background images, menu.



2 **Manage community content**

Select project grants, data sources, subjects and define other criteria to identify relevant research products among those in the OpenAIRE Graph.

3 **FAIR and Open Metadata**

The metadata records discoverable via the CONNECT Gateways are also available via the OpenAIRE API and as datasets on [Zenodo](#): your community can build added-value services on top of them.



4 **Collaborative management**

Share the curation activities among several community managers and moderate the contribution of members to collectively grow the record of the community.

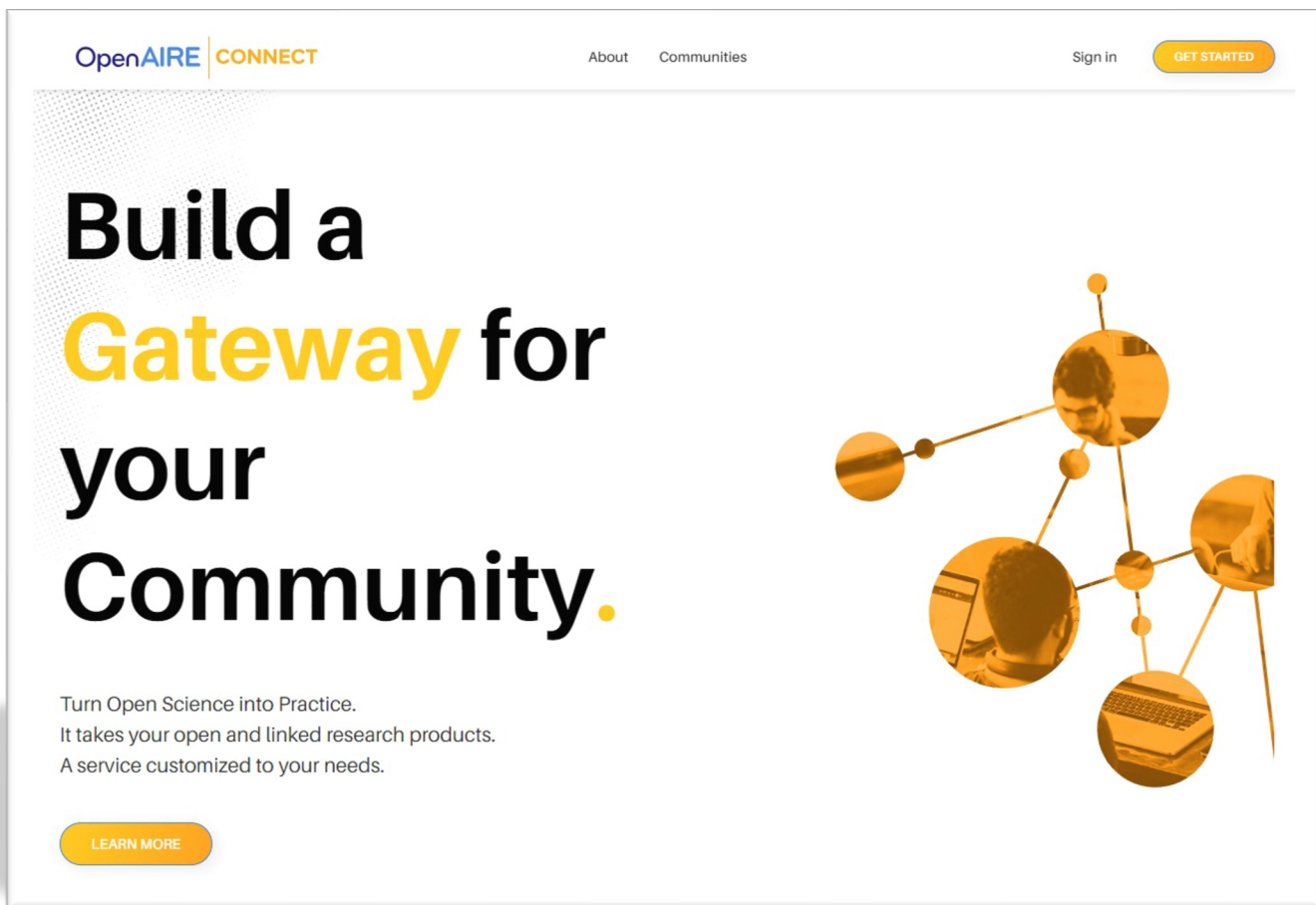


Features

Browse Community Gateways.

Visit

<https://connect.openaire.eu/>



The screenshot shows the OpenAIRE CONNECT website interface. At the top left is the logo 'OpenAIRE | CONNECT'. In the top right, there are links for 'About' and 'Communities', a 'Sign in' link, and a yellow 'GET STARTED' button. The main content area features a large heading: 'Build a Gateway for your Community.' The word 'Gateway' is in yellow, while the rest is in black. Below the heading is a sub-headline: 'Turn Open Science into Practice. It takes your open and linked research products. A service customized to your needs.' At the bottom left of this section is a yellow 'LEARN MORE' button. On the right side of the main content area is a network diagram with several circular nodes connected by lines. Some nodes contain images of people working at computers or laptops.

Request a Personalised Gateway



1. Contact us

2. Setup a call with the CONNECT team

3. Sign a Memorandum of Understanding

4. Login to setup, test and validate

5. Promote the gateway

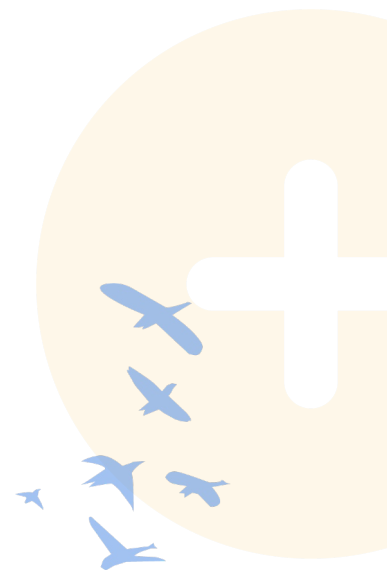
CONNECTing research communities with Open Science



OpenAIRE CONNECT born in 2017 as an EC H2020 project to design and develop Open Science services with an end-user driven approach. Five research communities were involved in the co-design and testing of the first version of CONNECT: digital humanities, neuroinformatics, marine science, and sustainable development.

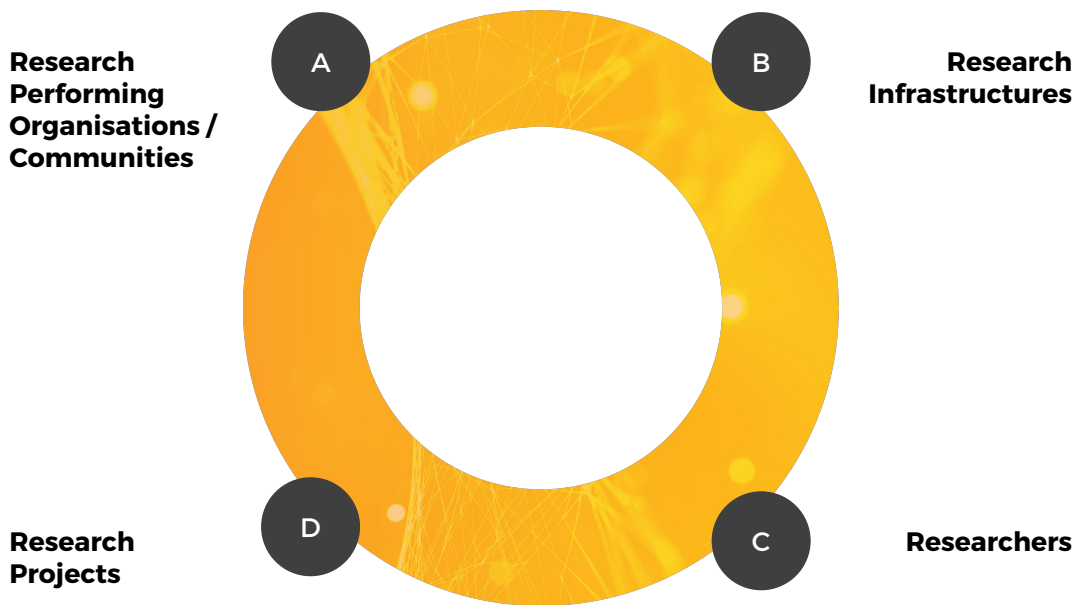


For more information on past and future of CONNECT, please visit CONNECT roadmap:
<https://trello.com/b/yfzUz0kp/openaire-connect-dashboard>



CONNECT history

Built for research communities
with research communities!



Business Model

A

Research Communities / Universities Alliances

CONNECT is ideal for research communities that need to create personalised research gateways for a specific topic and share the information with their peers. The service is offered on-demand with a **fee***.

C

Researchers

CONNECT gateways that are publicly open, are accessible by all researchers for **free**.

B

Research Infrastructures (RIs)

A RI can request a gateway to support discovery in its research field or to showcase its impact and simplify the reporting. The service is offered on-demand with a **fee***.

D

Research Projects

CONNECT is ideal for the creation of thematic gateways to support the research activities of the projects, and beyond. The service is offered on demand with a **fee***.

CONNECT Case Studies

Selective case studies from various research projects, communities and universities alliances.

CONNECT is built with research communities for research communities: every use case is an opportunity to improve the service from which all communities can benefit

1

Netherlands Research Portal

The Portal of Research Output from the Netherlands. In collaboration with UKB and SURF.

<https://netherlands.openaire.eu/>

2

NEANIAS Gateways

NEANIAS was an H2020 project on emerging atmosphere, underwater & space challenges. The project created three gateways, one for each research community:

<https://neanias-atmospheric.openaire.eu/>

<https://neanias-space.openaire.eu/>

<https://neanias-underwater.openaire.eu/>



CONNECT Case studies



3

DARIAH EU

DARIAH is the Digital Research Infrastructure for the Arts and Humanities. With CONNECT, DARIAH has a growing collection of DARIAH-affiliated research outputs and other documents useful for reporting and impact assessment.

<https://dariah.openaire.eu/>

4

EUTOPIA Open Research Portal

EUTOPIA is an alliance of 10 universities in need of a single entry-point for all the outputs of their researchers

<https://eutopia.openaire.eu/>

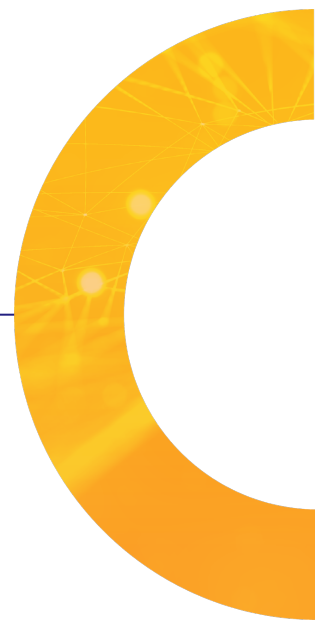
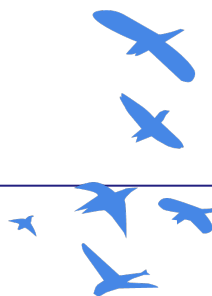


Let's build your community, together.

We look forward to working together and helping you unlock the full potential of your research community through Open Science.



+30



Community Gateways

Requested by research infrastructures, initiatives, projects in need of support for their reporting activities and for the implementation of Open Science practices.

A few with their logos below.

AURORA



Want to learn more?

You are more than welcome to join the CONNECT [community calls](#) and be part of the community.



Website: <https://connect.openaire.eu/>

Catalogue of services:
https://catalogue.openaire.eu/service/openaire.research_community_dashboard/overview

Support:
helpdesk@openaire.eu

